



Interface sheet - Norav PC-ECG 1200 - CPET Treadmill

Service documentation



Lode BV
Zernikepark 16
NL 9747 AN
Groningen
The Netherlands
t: +31 50 571 28 11
f: +31 50 571 67 46
@: ask@lode.nl

Table of contents

1 - List of symbols used	3
2 - Validity	3
3 - Setup instructions - Norav PC ECG 1200	5
3.1 - Cable selection	5
3.2 - Software setup	5
3.3 - Ergometer Setup	5
4 - Setting up the hardware	6
4.1 - Connection overview	6
4.2 - Connecting with the usb cable	7
4.3 - Connecting with the RS232 cable	7
5 - Treadmill or ergometer with 3.5" touch screen unit	8
6 - Treadmill or ergometer with 7" touch screen control unit	13
7 - Numerical Control Unit - Treadmill only	17
8 - Treadmill or Bicycle without control unit	19
8.1 - Device without control unit	19




1 - List of symbols used


 Next

 Next


 Next

 Next

 Previous

 Previous

 Previous

 Previous

2 - Validity



This interface form covers

- * All OEM treadmills manufactured by Lode B.V. with the part number 939900/01/02/07/08/09/10 starting from serial #939900-20090001;
- * All Katana treadmills 9349XX-201X0001
- * All Valiant treadmills starting with serial number 932900-20122XXX and 9329XX-20121XXX
- * All Valiant 2 treadmill starting with serial number 9389xx-20140001

If your treadmill or ergometer is not covered by this interface form please contact Lode service service@lode.nl



3 - Setup instructions - Norav PC ECG 1200

3.1 - Cable selection

The required cable is a USB A-B cable (Lode art. nr. 930916)

Connect the cable to the ergometer as described in chapter "Hardware setup".

Connect the usb cable to the computer and let Windows install the drivers. If your driver is not found you can download the FTDI driver here: <http://lode.nl/en/article/ftdi-drivers/18>

The driver is located under the services tab of the Lode homepage.

After installing the driver, the computer will generate a new COM port for this connection.

Switch on the ergometer.

3.2 - Software setup

1. Switch on the Computer and start the "Stress PC ECG Application"
2. Select setup
3. Select "Environment"
4. Select "Treadmills", choose COM port number and then select the "Lode LTP2" type
5. Press OK to save setup
6. Close the program and restart it to activate the made changes.

The software is now ready for communication with the Treadmill.

3.3 - Ergometer Setup

The following protocol needs to be set in the Lode ergometer to communicate with the external equipment.

Treadmill ergometer: Lode Treadmill 2

In case the Lode Treadmill 2 protocol is not available in your product, you may have to update the firmware if your treadmill. Please contact your distributor to update the treadmill.

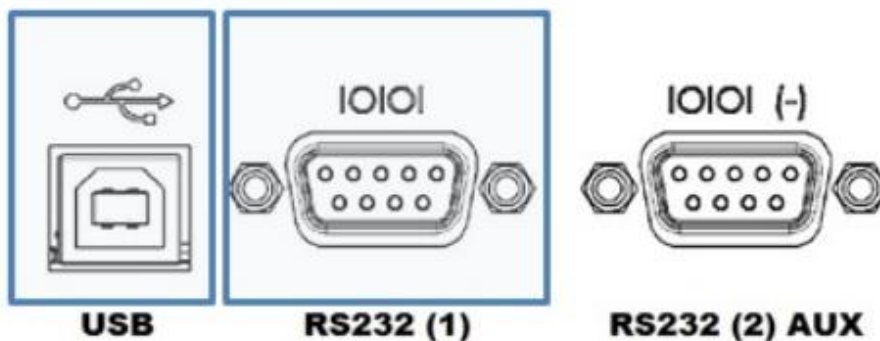
The next chapters describe the procedures to setup these protocols depending on the type of ergometer.



4 - Setting up the hardware

Lode ergometers have two ways of connecting external devices. The cable selection depends on the connection possibilities of the external device. The previous chapter tells you which cable you need. This can be a RS232 cable or a USB cable.

4.1 - Connection overview



Connect the cable to the USB port if you are using a USB cable.

Please note that you may have to install the FTDI driver on the external equipment. This procedure is only needed if windows fails to instal the driver automatically. You can find the driver on the Lode website under the

[Services](#) tab.

Locations:

- For the Treadmill the communication ports are Located on the front side near the power switch.
- For the bicycle ergometer the communication ports are located on the bottom of the bicycle. Tilt the ergometer on it's side to be able to acces these ports.

Communication Module:

Use the single RS232 port to connect the communication module to the external equipment.

Legacy communication card (picture above -> 1 * USB, 2 * RS232)

In case you are using a RS232 cable you must use the RS232 port closest to the USB connector, on the picture indicated with RS232 (1).



4.2 - Connecting with the usb cable



If there is no other connection available you can also use a USB cable to connect.

1. You will need an USB A to B cable (Lode part no. 930916) to establish communication between the Lode ergometer and your stress system or ergospirometrysystem. See picture left.
2. Connect the cable to the Lode ergometer.
3. Connect the cable to the external device.

4.3 - Connecting with the RS232 cable

Connecting with the RS232 cable



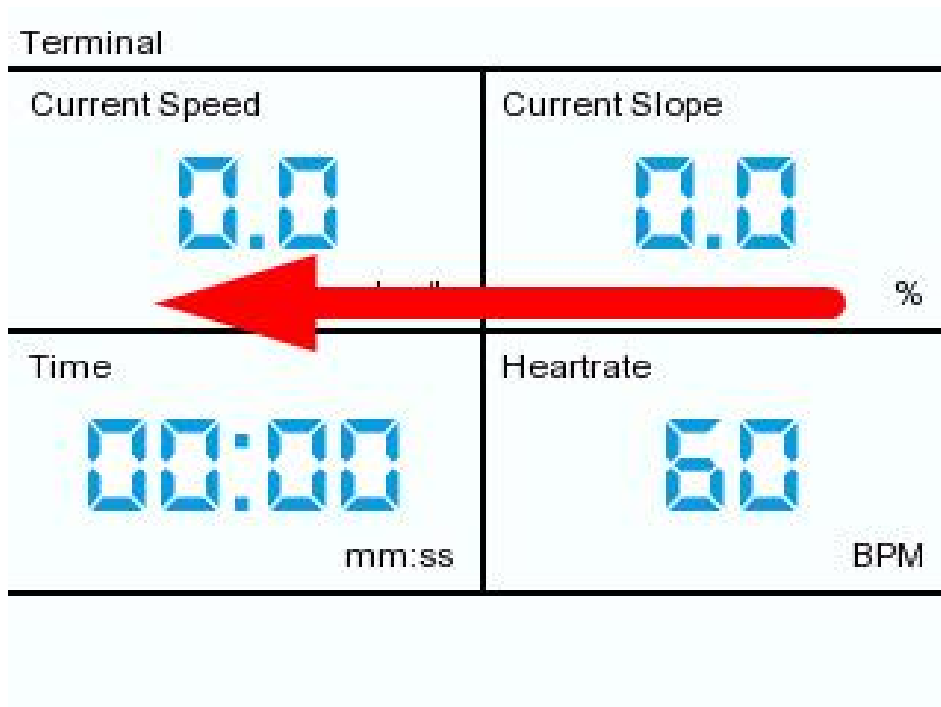
1. Depending on the external device you may need to use a straight RS232 cable (Lode part no. 930911) or a cross linked cable. The cable selection chapter specifies which cable is needed.
2. Connect the cable to the Lode ergometer.
3. Connect the cable to the external device.



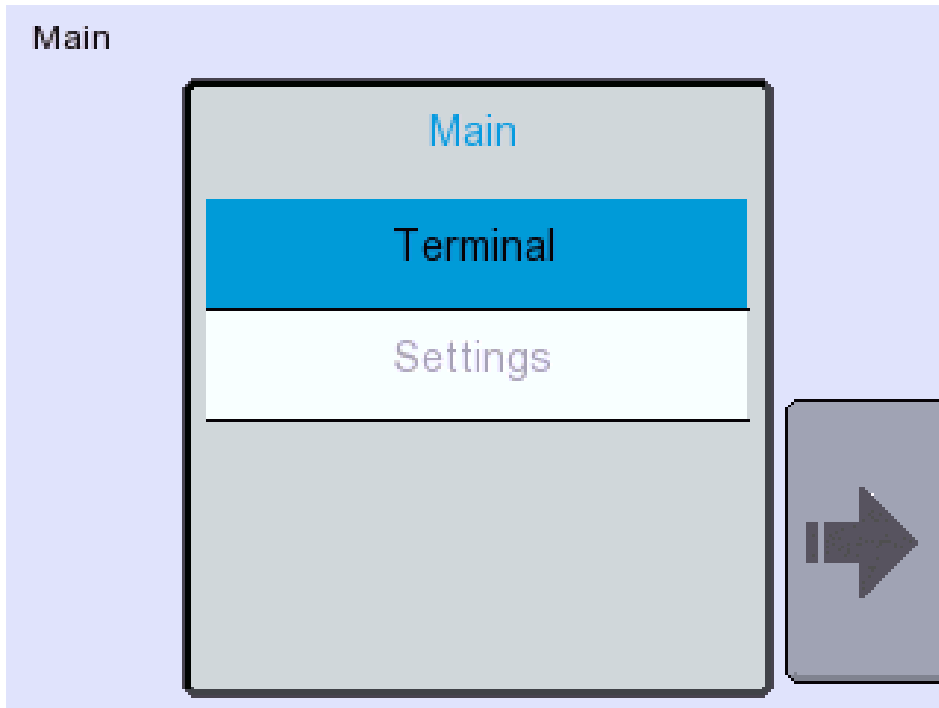
5 - Treadmill or ergometer with 3.5" touch screen unit



Start the Lode ergometer. During start up information about the ergometer, like the kind of device, the serial number and the connected modules is displayed.



After initialisation the terminal mode is automatically displayed. Swipe with your finger over the screen as indicated with the red arrow in the picture to go to the main menu.



Select "Settings" to change settings of the device.

In the Settings Menu you can scroll down and select the following menu's with the up/down and right arrows:

- Language
- Sleep Mode
- Terminal Settings
- Display Settings
- Display Lay-out
- Service

With the Home and Left button you will go back to the Main Menu.



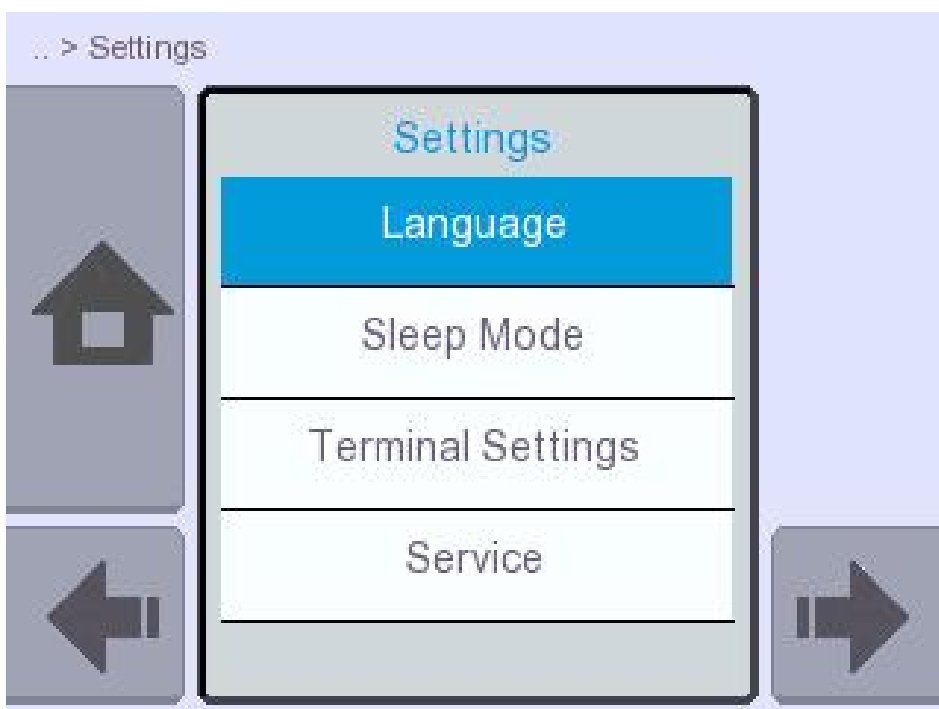
Select the Communication protocol as described in "Ergometer setup" chapter.



Select "Default" for the baudrate.



Select "RS232" or "USB" depending in which cable you have connected to the Lode ergometer.



Select the button with the house to go back to the main menu.



Main



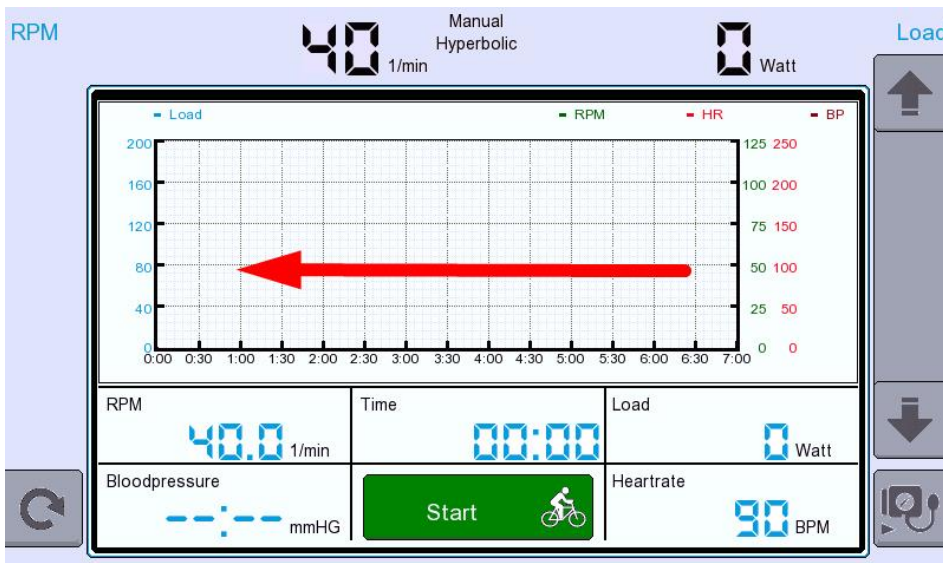
Select "Terminal" to set the ergometer in terminal mode. Your device is now ready for external control.



6 - Treadmill or ergometer with 7" touch screen control unit

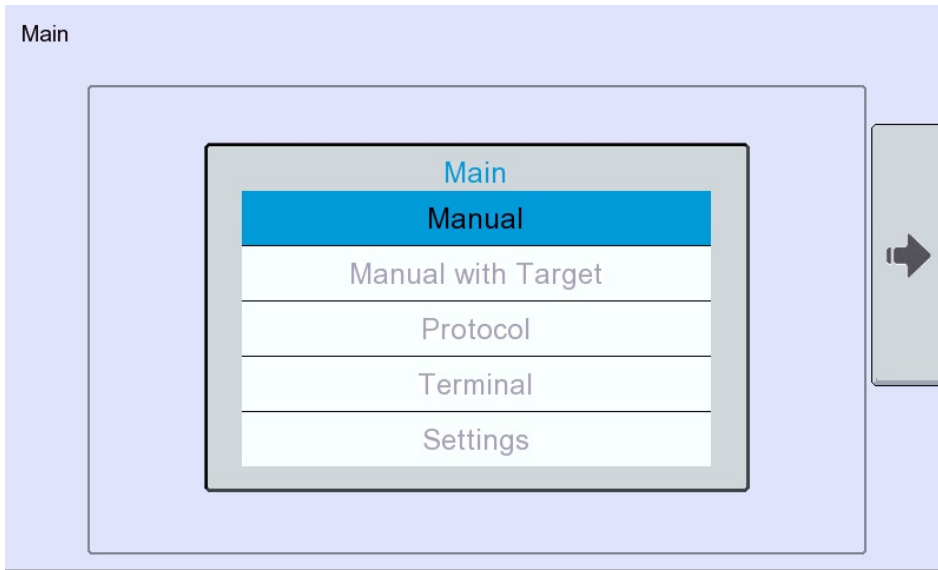


Start the device. Information about the device is shown on the display during boot mode.

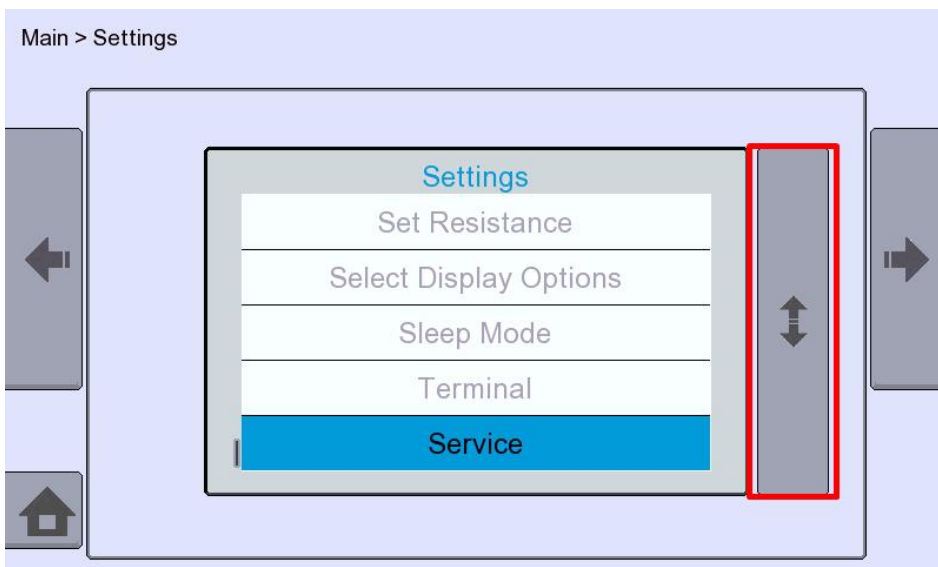


After boot up the device shows the Test window or main menu.

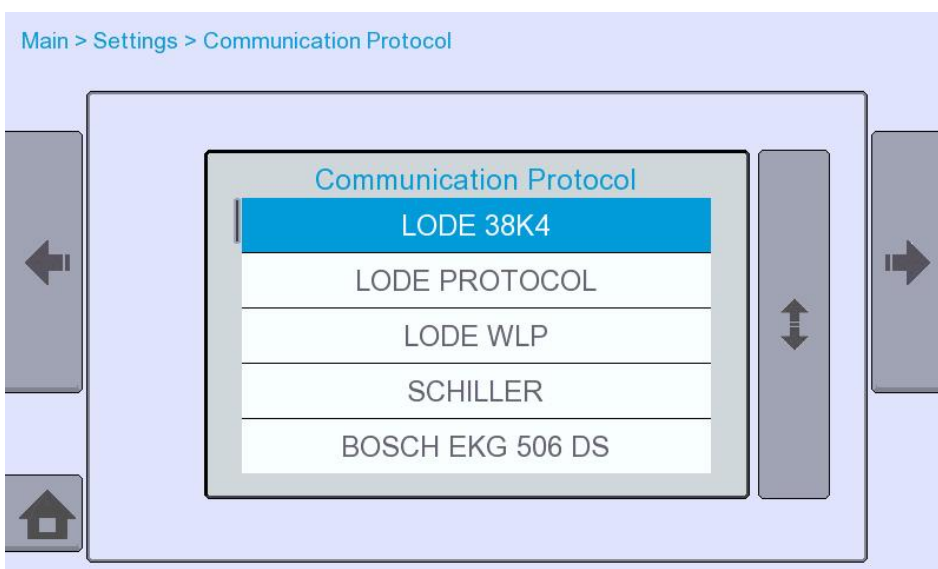
To access the menu from the Test window you need to swipe the graph area of the touch screen as indicated in the picture.



Select "settings" to go to the settings menu.



Scroll down using the red marked scroll button and select "Terminal".

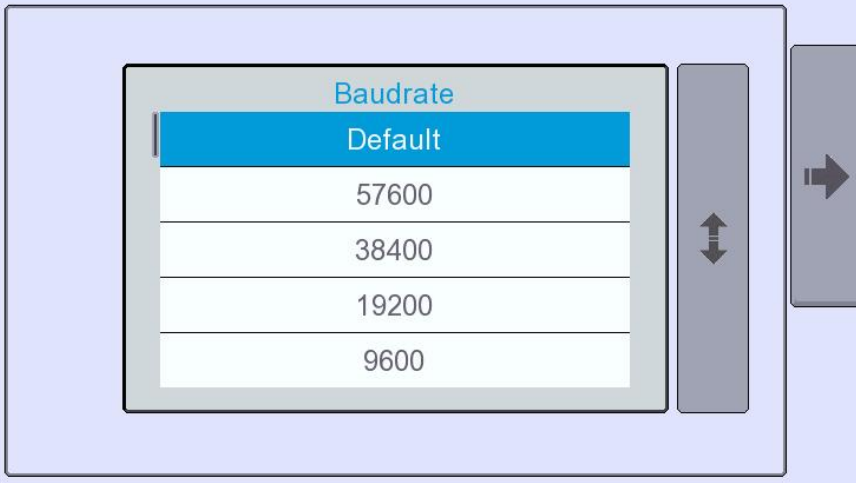


Select the communication protocol as described in the "Ergometer setup" chapter.

Use the scroll button to view the complete list.

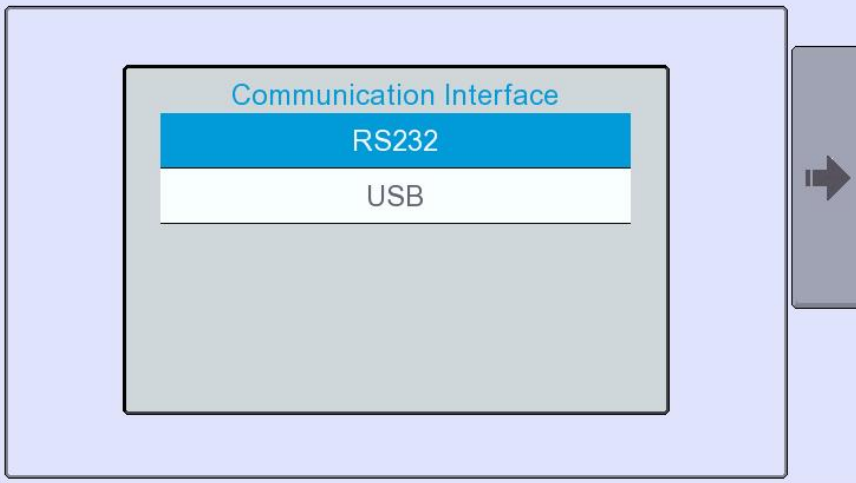


Main > Settings > Communication Protocol > Baudrate

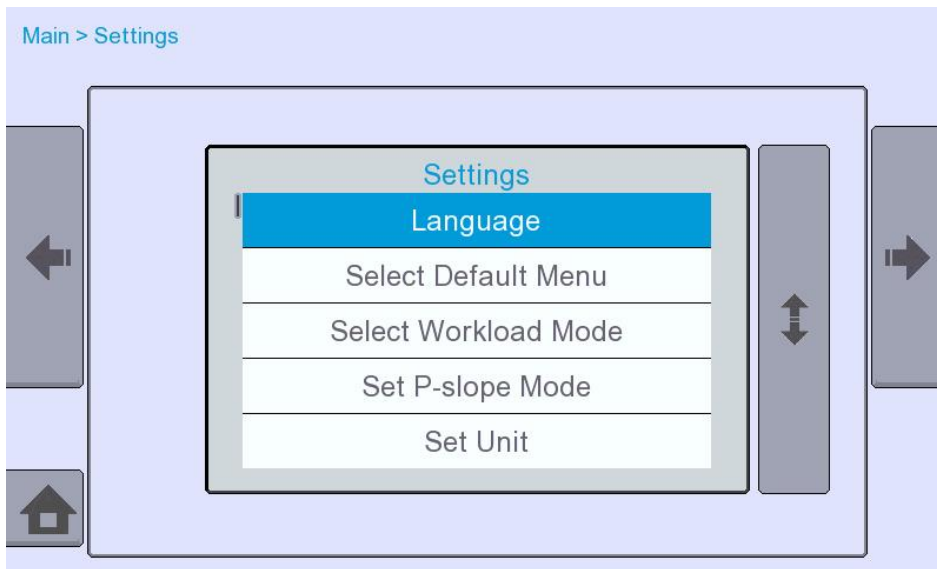


Select "Default" for the baudrate.

Main > Settings > Communication Protocol > Baudrate > Communication Interface



Select "RS232" or "USB" depending on the type of cable that you connected to the Lode ergometer.



Press the home button on the left bottom corner and select "Terminal". Your ergometer is now ready for external communication.

optional

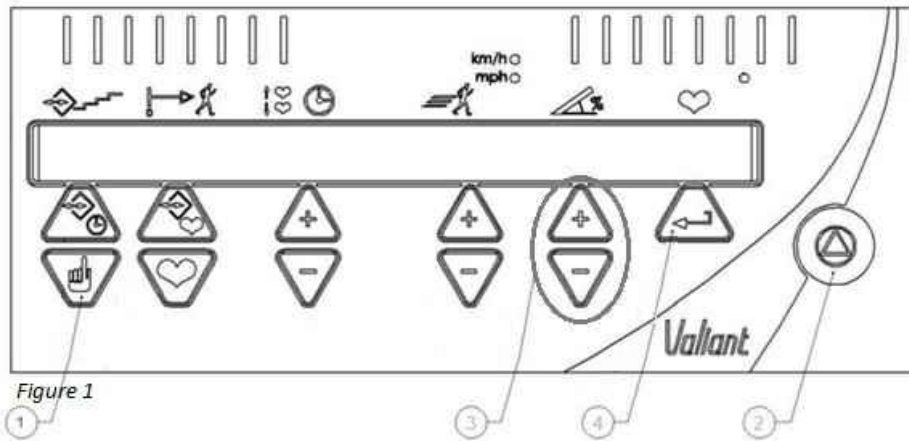
Your ergometer can be set to boot up in terminal mode. Follow these steps to activate this function:

- Go to the settings menu
- Select "Default Start Menu"
- Select "Terminal"

- Switch the ergometer off and on. It will boot directly into terminal mode.



7 - Numerical Control Unit - Treadmill only



1. Press and hold key #1 and #2 as shown on "Figure 1" for 10 seconds.

2. Press the enter key #4 until the display shows terminal 0

3. By using the "+" and "-" keys for the grade adjustment #3 you can change the "0" behind terminal to "1" to activate the Terminal mode.

4. Press enter #4 and "prot id" will be shown on the display, for Lode protocol this should be set to "1". Set the protocol as described in the "Ergometer setup" chapter.

The following protocols can be selected

Lode = Lode protocol

trAck = Trackmaster communication protocol

UUood = Woodway communication protocol

HPcoS = HP Cosmos communication protocol

gE = GE protocol

5. Press enter #4 and "baudrate" will be displayed to set the correct baudrate, select "0" for auto select.

The following baudrates can be set:

Baudrate = 0 (Autoselect dependent on protocol-id)

2400;

4800;

9600;

19200;

38400;

57600

6. Press enter #4 and "interface" will be displayed, you can choose the communication port which you would like to select.



Interface = CIM interface choice. Select "RS232" or "USB" depending on the cable that you connected to the treadmill.

0 = RS232

1 = RS232-AUX

2 = USB

7. Press enter #4; the next step "Neg Elev" is read only and is "1" when a negative elevation option has been added to the treadmill, without a negative elevation option this value shows "0".

Neg Elev = Negative elevation (read-only)

0 = not present

1 = present

Press the stop button #2 on the control unit or wait 10 seconds to leave the settings menu and let your changes take effect.



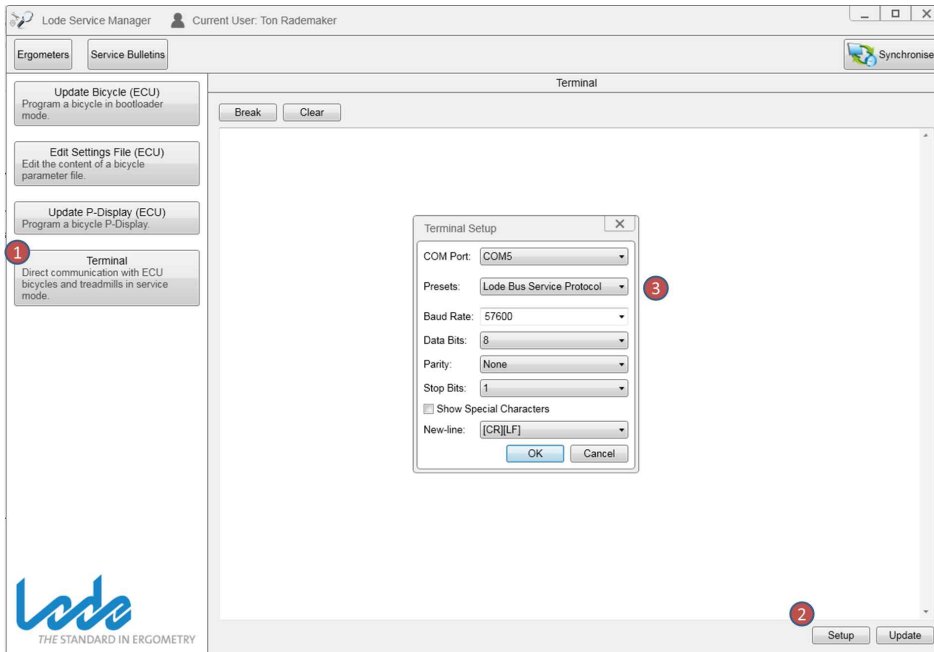
8 - Treadmill or Bicycle without control unit

8.1 - Device without control unit

In case the device does not have a control unit the correct protocol can be set from a computer by using the Lode Service Manager tool that can be downloaded from the Lode website if you are a registered user. <http://lode.nl/en/product/getDownload/469>

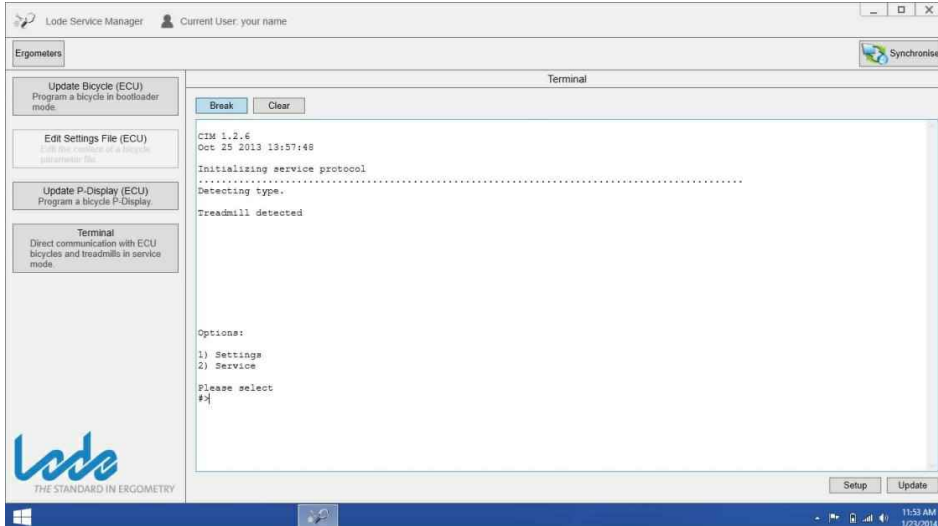
Connect an USB cable from the computer to the USB port of the treadmill or use a RS232 cable from the computer to the RS232 port

Start the Lode Service Manager and login with the same account details that you use to login on the website.



1. Select Terminal
2. Choose Setup to select the COM port on which the device is connected.
3. Select preset Lode Bus Service Protocol
4. Press OK
5. Press Break
6. Switch the device off, wait 10 seconds

7. Switch the device on



The screen as shown left should show up within 5 seconds after powering up.

Figure 3

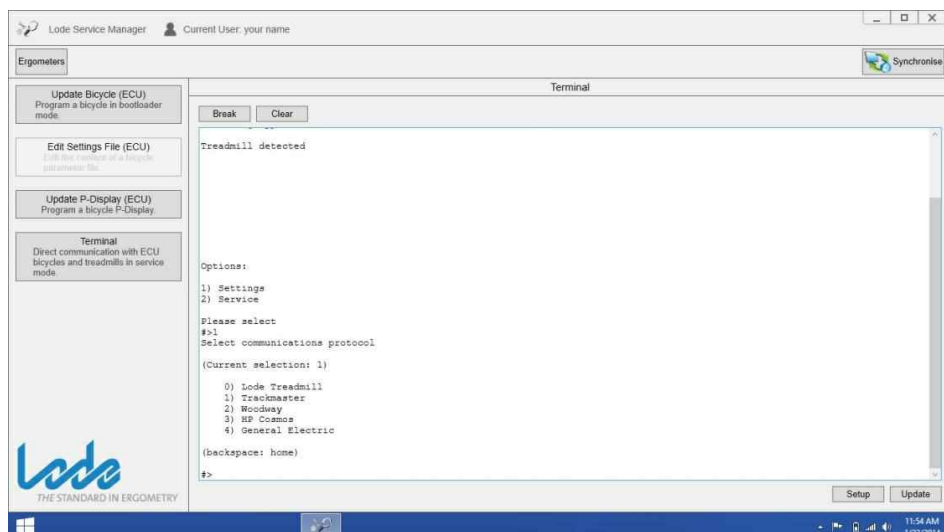


Figure 4

A menu is showed. use the numerical keys to make your selection. The next menu will automatically come up when a number is pushed.

Select settings (1) and choose the protocol as described in the "Ergometer set-up" chapter.

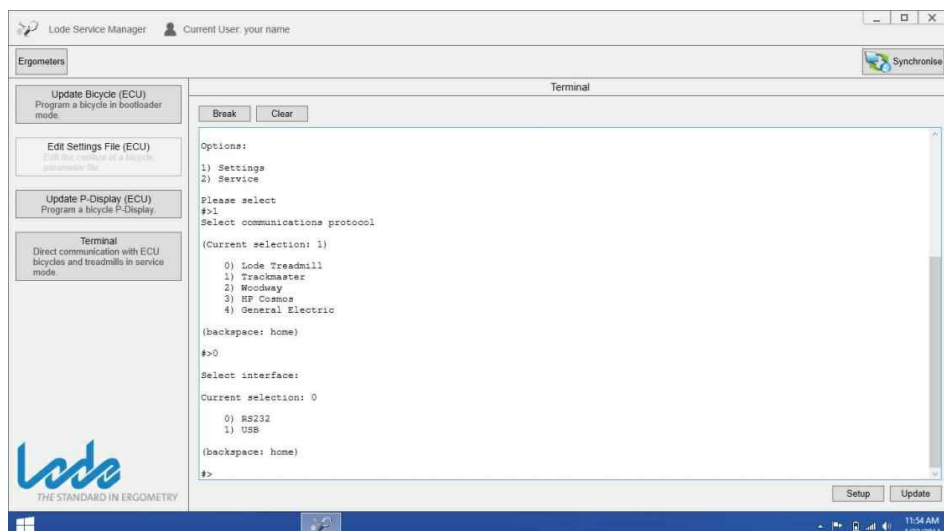


Figure 5

Choose which port you want to use RS232 (0) or USB (1)

This setting refers to the type of cable that you have connected to the Lode ergometer.

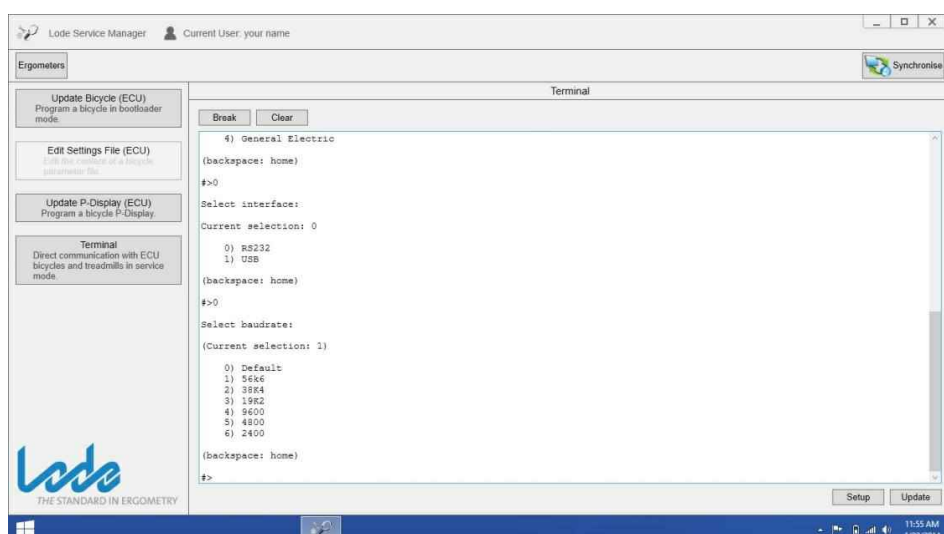
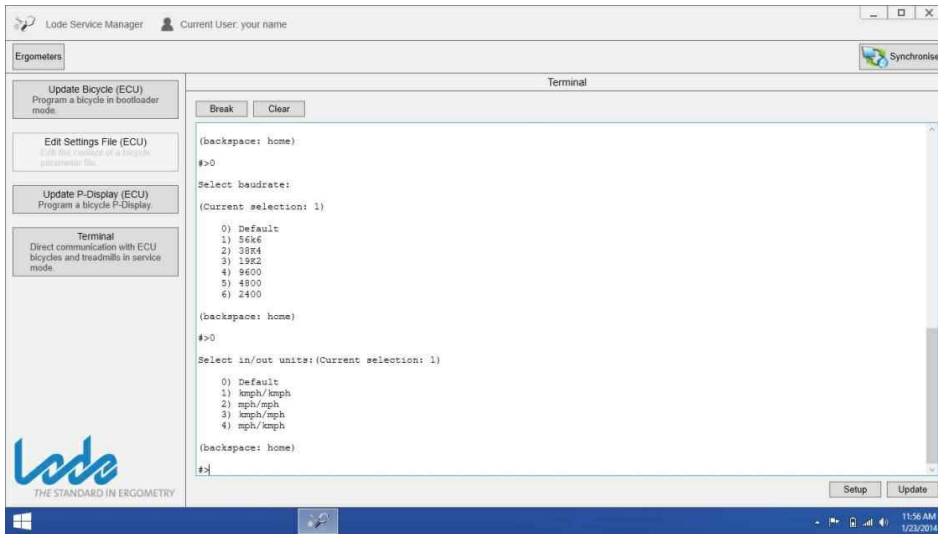


Figure 6

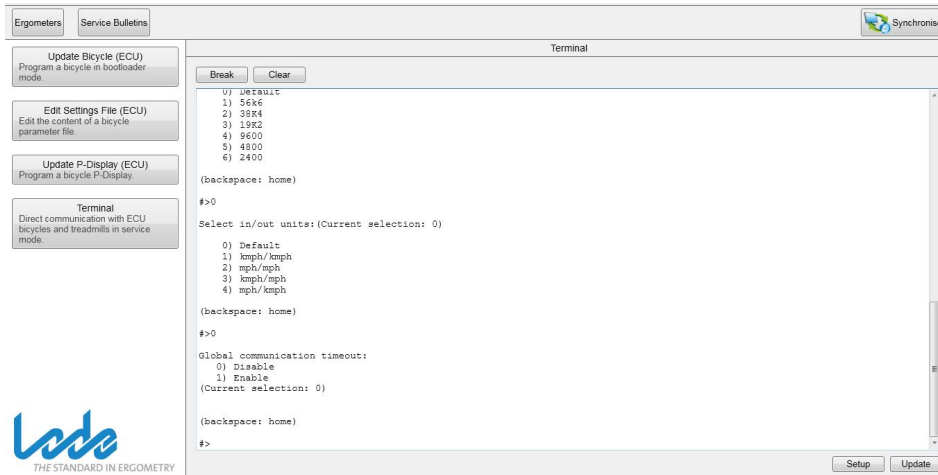
Select default for the baudrate.

Note that Default should always be selected unless different specified by your dealer.

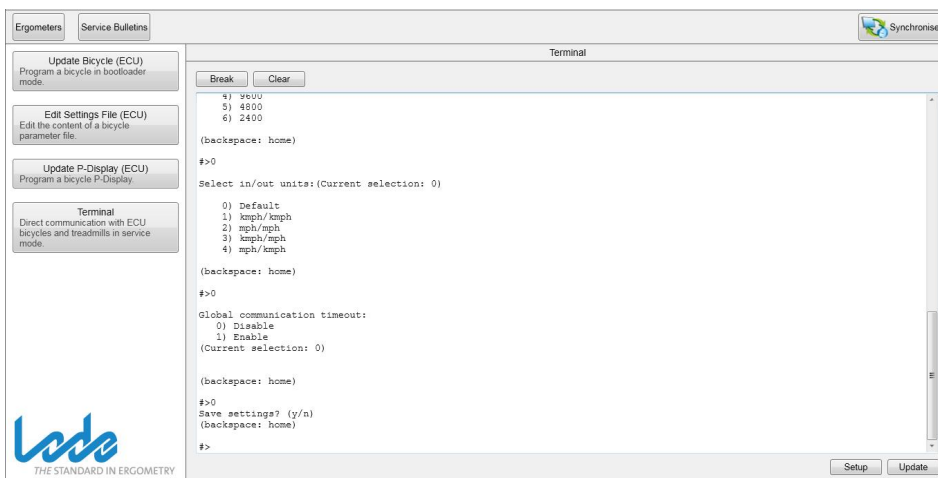


Select the kmh/kmh (1) conversion for if you are using the Trackmaster protocol. If you are using a protocol other than Trackmaster select "no conversion" (0).

Figure 7



Select "Disable" (0) for Global communication timeout.



Press "Y" to save the new settings and restart the device. Your device is now ready for use with the external controller.

Note that the device is automatically switched to terminal mode when no manual controller is present at the device itself.