



Interface sheet - Korr Cardio Coach Monitor - CPET Ergometer

Service documentation



Lode BV
Zernikepark 16
NL 9747 AN Groningen
The Netherlands
t: +31 50 571 28 11
f: +31 50 571 67 46
@: ask@lode.nl
www.lode.nl

Table of contents

1 - List of symbols used	3
2 - Validity	3
3 - Setup instructions Korr Cardio Coach Monitor	4
3.1 - Cable selection	4
3.2 - Software setup	4
3.3 - Ergometer setup	5
4 - Setting up the hardware	6
4.1 - Connection overview	6
4.2 - Connecting with the usb cable	7
4.3 - Connecting with the RS232 cable	7
5 - Treadmill or ergometer with 3.5" touch screen unit	8
6 - Treadmill or ergometer with 7" touch screen control unit	13
7 - Numerical Control Unit - Treadmill only	17
8 - Treadmill or Bicycle without control unit	19
8.1 - Device without control unit	19



1 - List of symbols used



Next



Previous

2 - Validity

This interface form covers

* All Corival ergometers starting with serialnumber 9609xx-20150001

If your treadmill or ergometer is not covered by this interface form please contact Lode service service@lode.nl



3 - Setup instructions Korr Cardio Coach Monitor

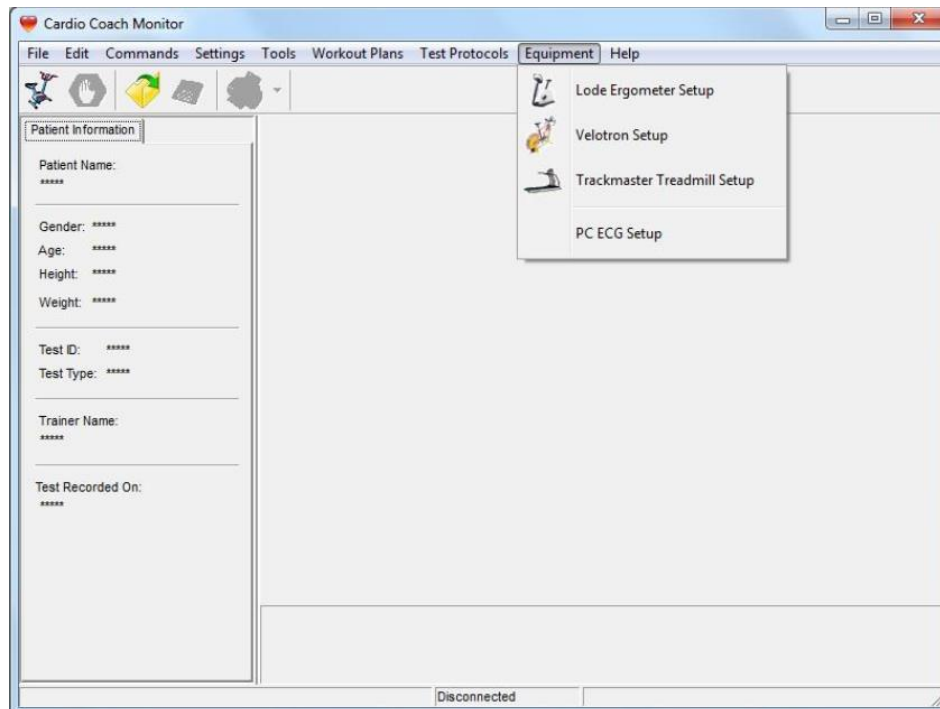
3.1 - Cable selection

The required cable is a USB A-B cable (Lode art. nr. 930916)

Connect the cable to the ergometer as described in chapter "Hardware setup".

Connect the usb cable to the computer and let Windows install the drivers. If your driver is not found you can download the FTDI driver here: <http://lode.nl/en/article/ftdi-drivers/18>

The driver is located under the services tab of the Lode homepage.



3.2 - Software setup

1. For controlling the Lode ergometer by the software, you will have to make a "device configuration" in the Korr System. Take the following steps:
2. Go to Equipment.
3. Select the Lode Ergometer setup



1. The following popup will appear
2. Press Check Device to establish the connection
3. The version number and serial number of your ergometer should appear in the Info box.

The Korr system is now ready for use. Setup the Lode ergometer as described in the next chapters before starting a test.

To run a test using the Lode Ergometer select "Commands | New Test" from the main menu. This brings up the "Start New Test" dialog. Enter the customer information, (name, height, weight ...) then on the "Test Type" select a protocol that uses the Lode Ergometer. Next click OK to start the VO2 Test.

With a Lode Ergometer protocol selected the CardioCoach Monitor will automatically update the resistance on the ergometer at each step of the protocol. Also, the CardioCoach Monitor reads the speed and wattage of the ergometer during the test and plots it for you as the test runs.

NOTE: Remember the Lode Ergometer requires that you maintain at least 30 rpm in speed or the ergometer will not apply resistance.
The system is ready for use.

3.3 - Ergometer setup

The following protocol needs to be set in the Lode ergometer to communicate with the external equipment.

Bicycle ergometer: Lode RS232

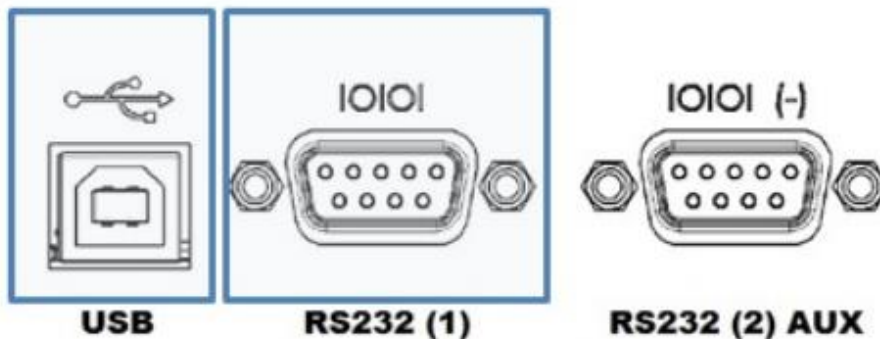
The next chapters describe the procedures to setup these protocols depending on the type of ergometer.



4 - Setting up the hardware

Lode ergometers have two ways of connecting external devices. The cable selection depends on the connection possibilities of the external device. The previous chapter tells you which cable you need. This can be a RS232 cable or a USB cable.

4.1 - Connection overview



Connect the cable to the USB port if you are using a USB cable.

Please note that you may have to install the FTDI driver on the external equipment. This procedure is only needed if windows fails to instal the driver automatically.

You can find the driver on the Lode website under the [Services](#) tab.

Locations:

- For the Treadmill the communication ports are Located on the front side near the power switch.
- For the bicycle ergometer the communication ports are located on the bottom of the bicycle. Tilt the ergometer on it's side to be able to acces these ports.

Communication Module:

Use the single RS232 port to connect the communication module to the external equipment.

Legacy communication card (picture above -> 1 * USB, 2 * RS232)

In case you are using a RS232 cable you must use the RS232 port closest to the USB connector, on the picture indicated with RS232 (1).



4.2 - Connecting with the usb cable



If there is no other connection available you can also use a USB cable to connect.

1. You will need an USB A to B cable (Lode part no. 930916) to establish communication between the Lode ergometer and your stress system or ergospirometrysystem. See picture left.
2. Connect the cable to the Lode ergometer.
3. Connect the cable to the external device.

4.3 - Connecting with the RS232 cable

Connecting with the RS232 cable



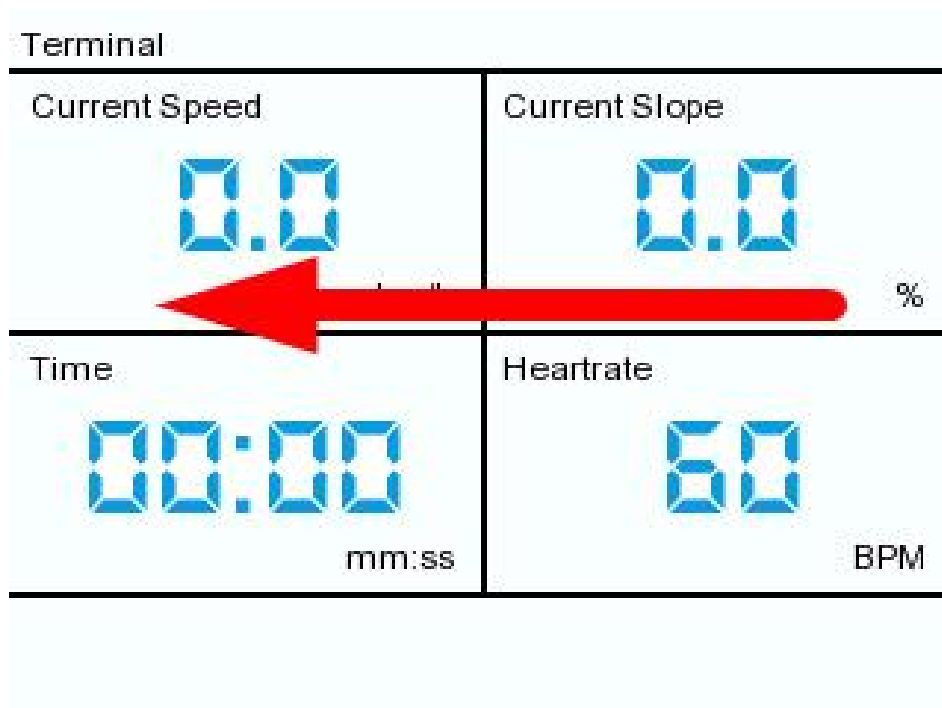
1. Depending on the external device you may need to use a straight RS232 cable (Lode part no. 930911) or a cross linked cable. The cable selection chapter specifies which cable is needed.
2. Connect the cable to the Lode ergometer.
3. Connect the cable to the external device.



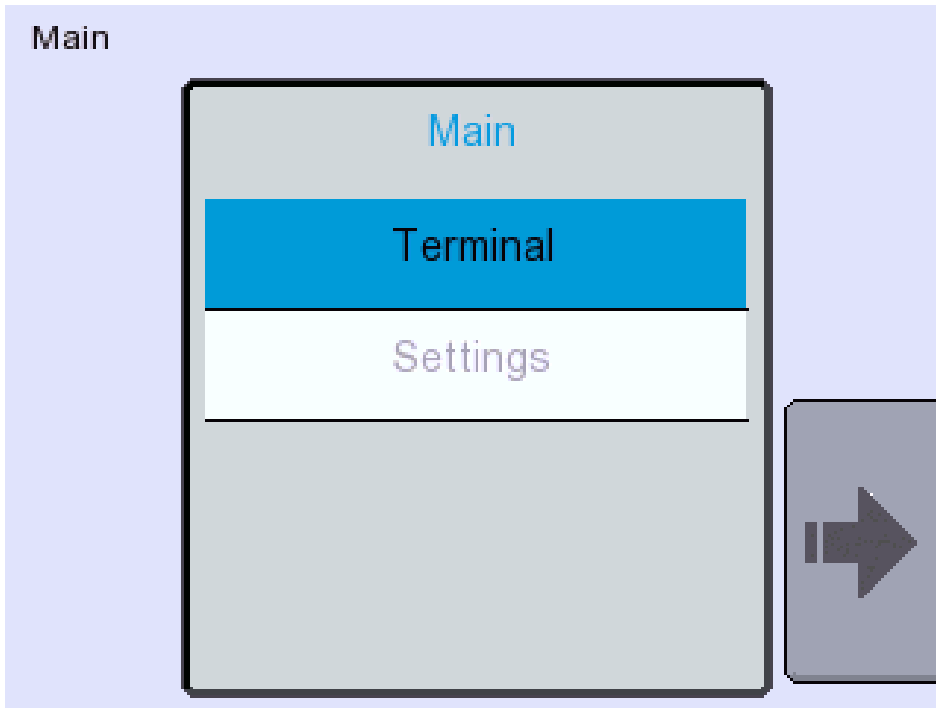
5 - Treadmill or ergometer with 3.5" touch screen unit



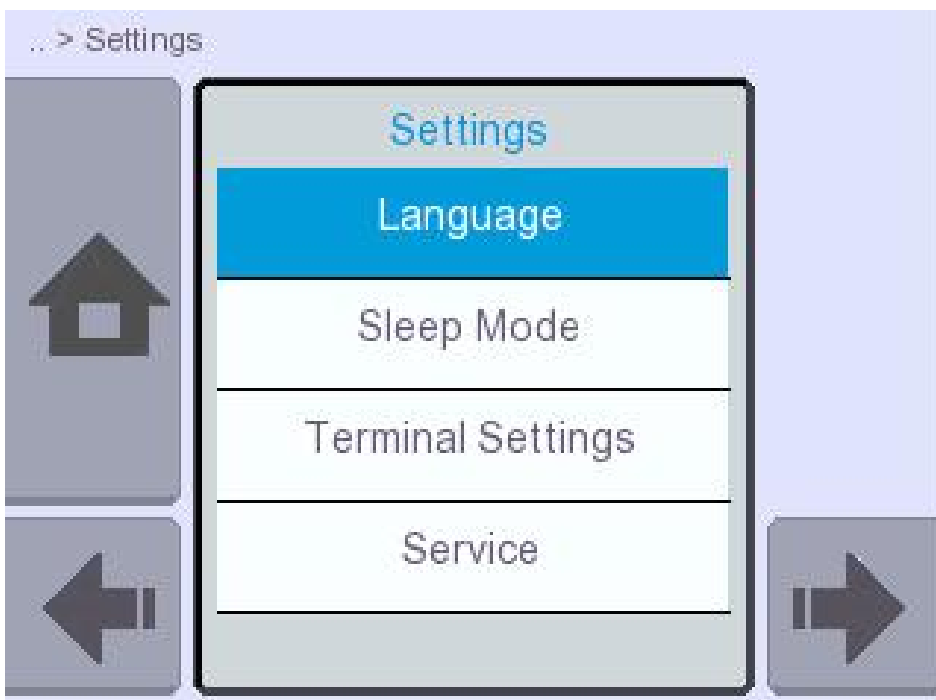
Start the Lode ergometer. During start up information about the ergometer, like the kind of device, the serial number and the connected modules is displayed.



After initialisation the terminal mode is automatically displayed. Swipe with your finger over the screen as indicated with the red arrow in the picture to go to the main menu.



Select "Settings" to change settings of the device.



You can choose your Language in the "Language" menu. The menu "Sleep Mode" sets a screensaver. The menu "Terminal Settings" lets you set the communication settings for external communication. The menu "Service" is only intended for service purposes to be executed by factory trained personnel.

Select "Terminal Settings" to change the communication protocol.



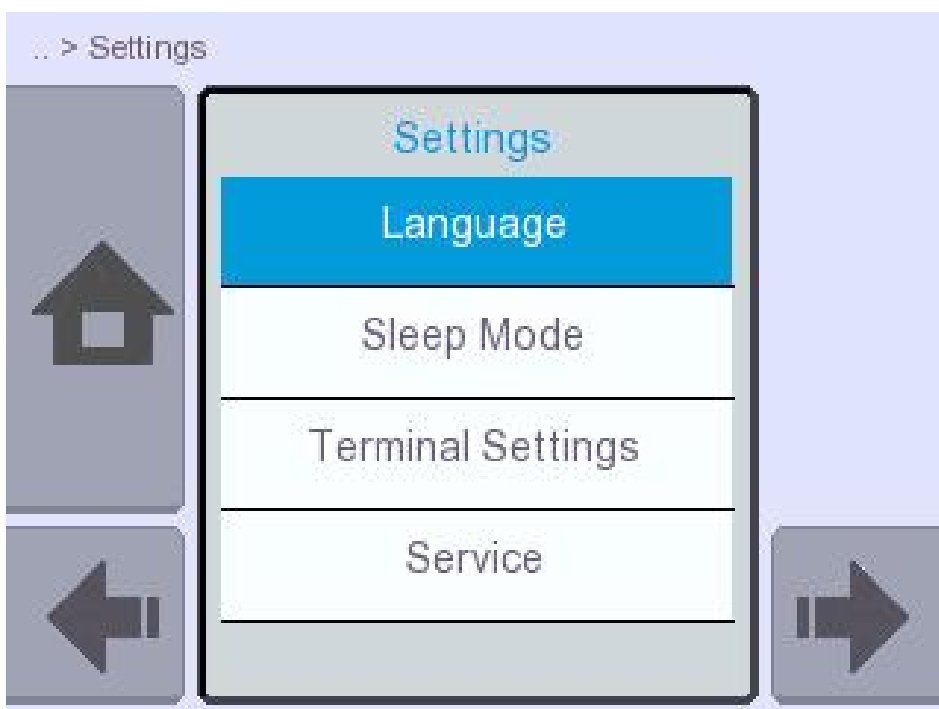
Select the Communication protocol as described in "Ergometer setup" chapter.



Select "Default" for the baudrate.



Select "RS232" or "USB" depending in which cable you have connected to the Lode ergometer.



Select the button with the house to go back to the main menu.



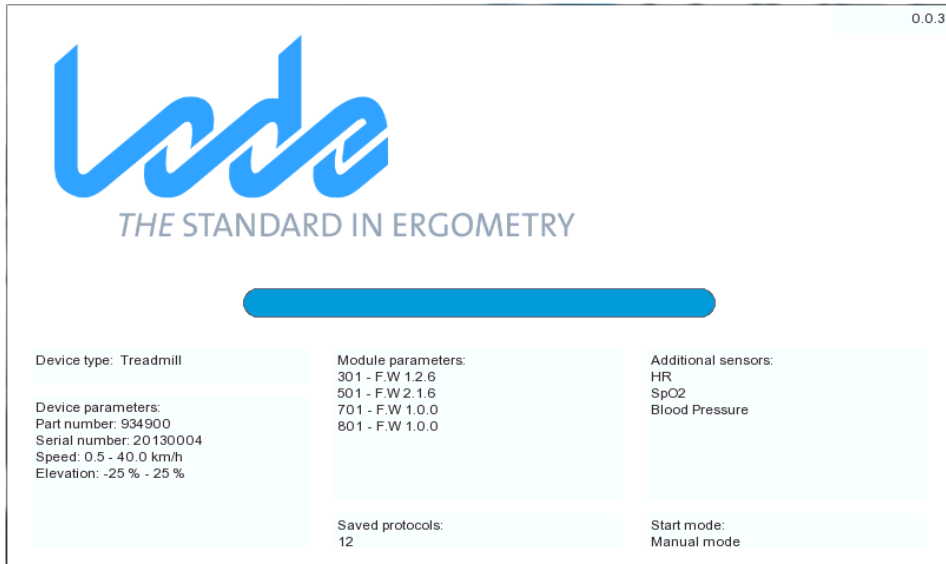
Main



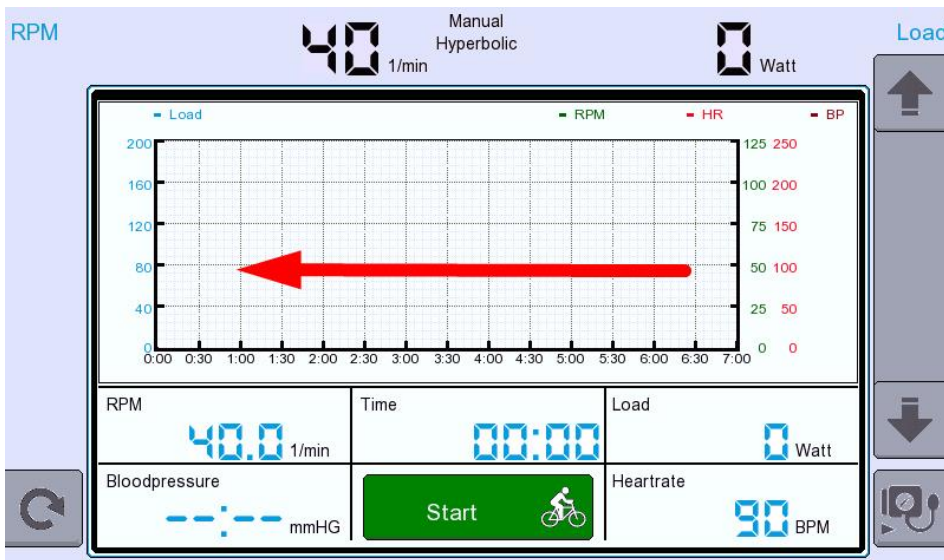
Select "Terminal" to set the ergometer in terminal mode. Your device is now ready for external control.



6 - Treadmill or ergometer with 7" touch screen control unit



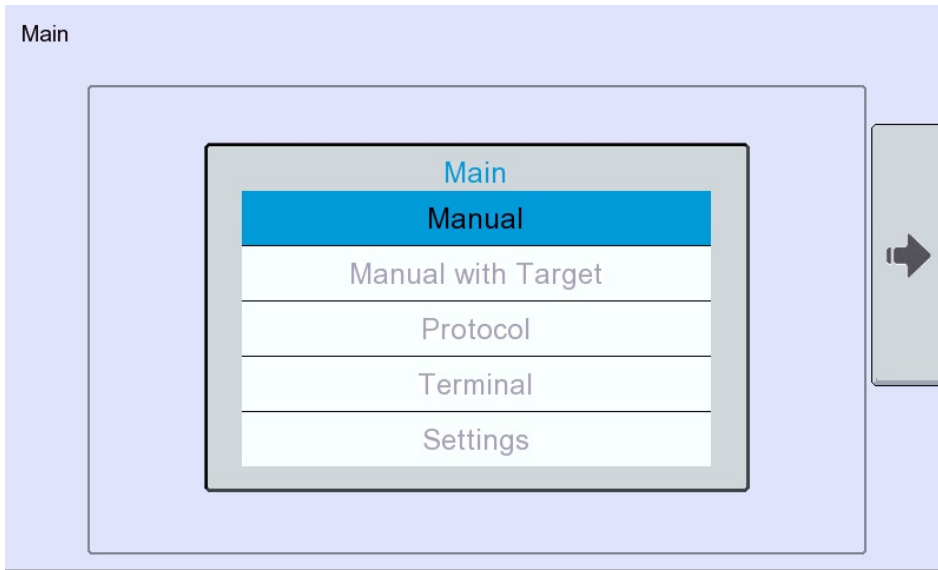
Start the device. Information about the device is shown on the display during boot mode.



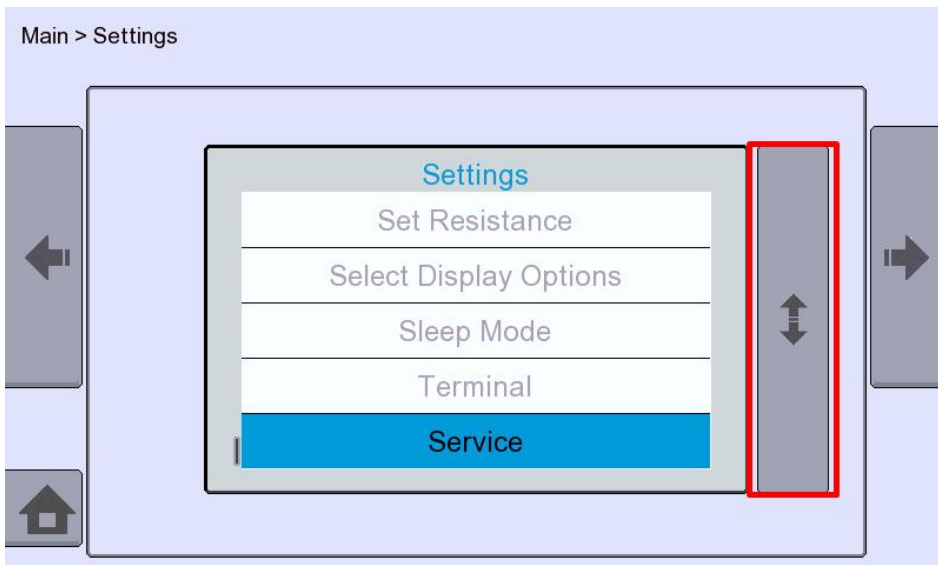
After boot up the device shows the Test window or main menu.

To access the menu from the Test window you need to swipe the graph area of the touch screen as indicated in the picture.

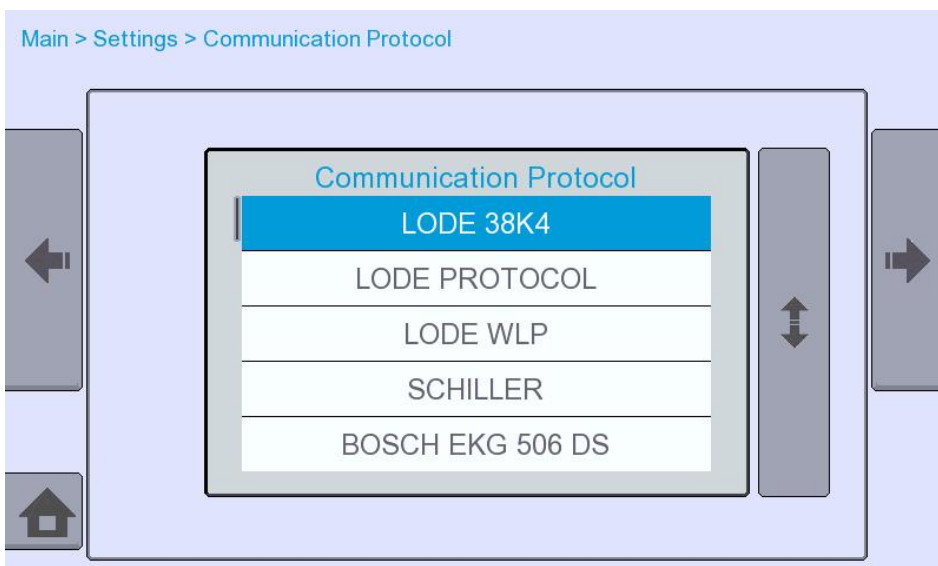
*Note that for this instruction the graphic view for a Lode Corival is used. The view for a treadmill might differ a bit but the procedure is the same.



Select "settings" to go to the settings menu.



Scroll down using the red marked scroll button and select "Terminal".

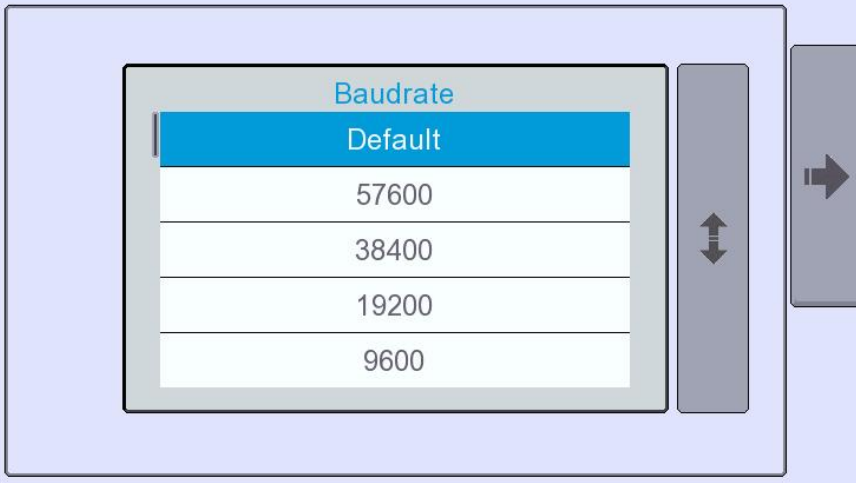


Select the communication protocol as described in the "Ergometer setup" chapter.

Use the scroll button to view the complete list.

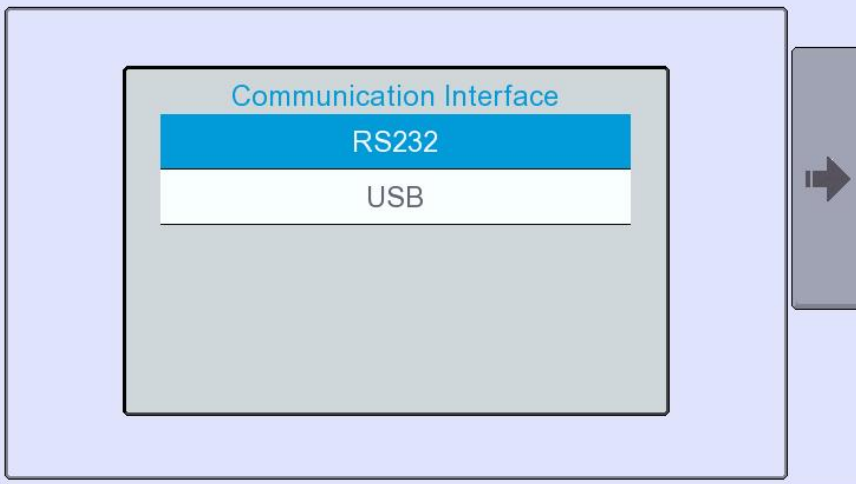


Main > Settings > Communication Protocol > Baudrate

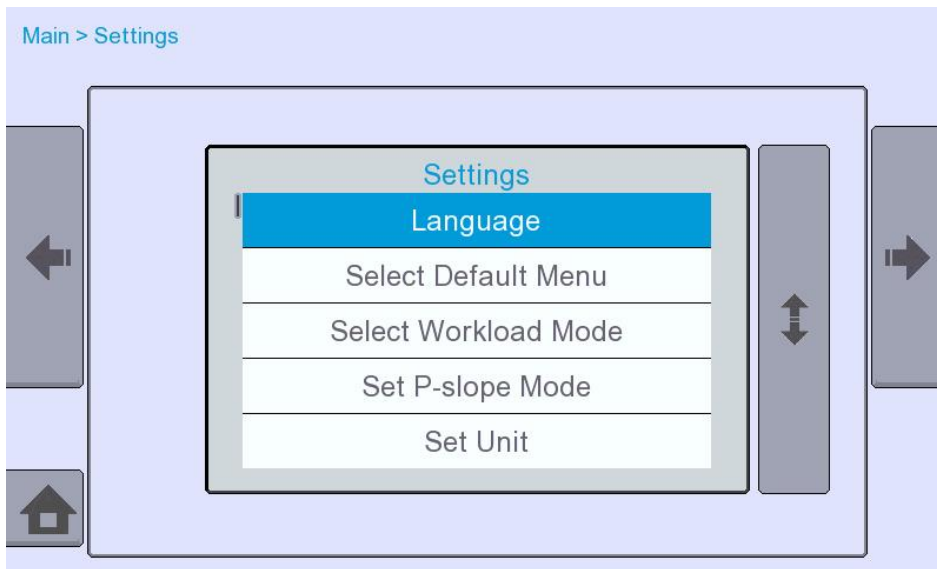


Select "Default" for the baudrate.

Main > Settings > Communication Protocol > Baudrate > Communication Interface



Select "RS232" or "USB" depending on the type of cable that you connected to the Lode ergometer.



Press the home button on the left bottom corner and select "Terminal". Your ergometer is now ready for external communication.

optional

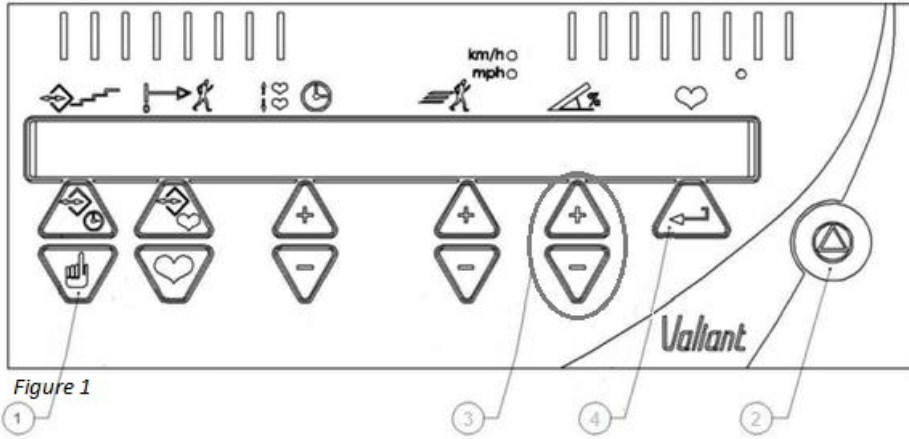
Your ergometer can be set to boot up in terminal mode. Follow these steps to activate this function:

- Go to the settings menu
- Select "Default Start Menu"
- Select "Terminal"
- Switch the ergometer off and

on. It will boot directly into terminal mode.



7 - Numerical Control Unit - Treadmill only



1. Press and hold key #1 and #2 as shown on "Figure 1" for 10 seconds.



2. Press the enter key #4 until the display shows terminal 0

3. By using the "+" and "-" keys for the grade adjustment #3 you can change the "0" behind terminal to "1" to activate the Terminal mode.

4. Press enter #4 and "prot id" will be shown on the display, for Lode protocol this should be set to "1". Set the protocol as described in the "Ergometer setup" chapter.

The following protocols can be selected

Lode = Lode protocol

trAck = Trackmaster communication protocol

UUood = Woodway communication protocol

HPcoS = HP Cosmos communication protocol

gE = GE protocol

5. Press enter #4 and "baudrate" will be displayed to set the correct baudrate, select "0" for auto select.

The following baudrates can be set:

Baudrate = 0 (Autoselect dependent on protocol-id)

2400;

4800;

9600;

19200;

38400;

57600

6. Press enter #4 and "interface" will be displayed, you can choose the communication port which you would like to select.

Interface = CIM interface choice. Select "RS232" or "USB" depending on the cable that you connected to the treadmill.

0 = RS232

1 = RS232-AUX

2 = USB

7. Press enter #4; the next step "Neg Elev" is read only and is "1" when a negative elevation option has been added to the treadmill, without a negative elevation option this value shows "0".

Neg Elev = Negative elevation (read-only)

0 = not present

1 = present

Press the stop button #2 on the control unit or wait 10 seconds to leave the settings menu and let your changes take effect.



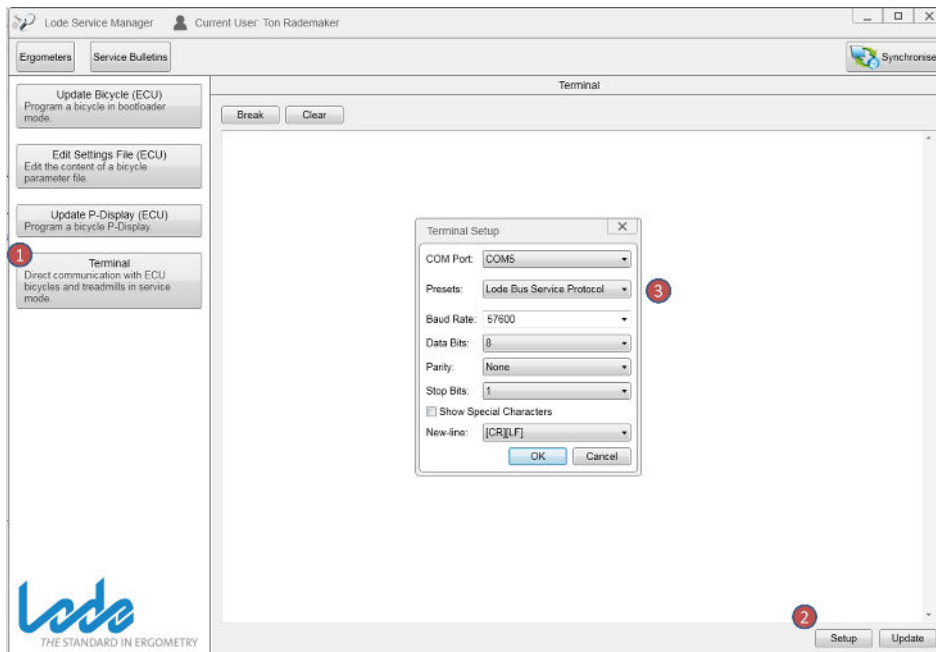
8 - Treadmill or Bicycle without control unit

8.1 - Device without control unit

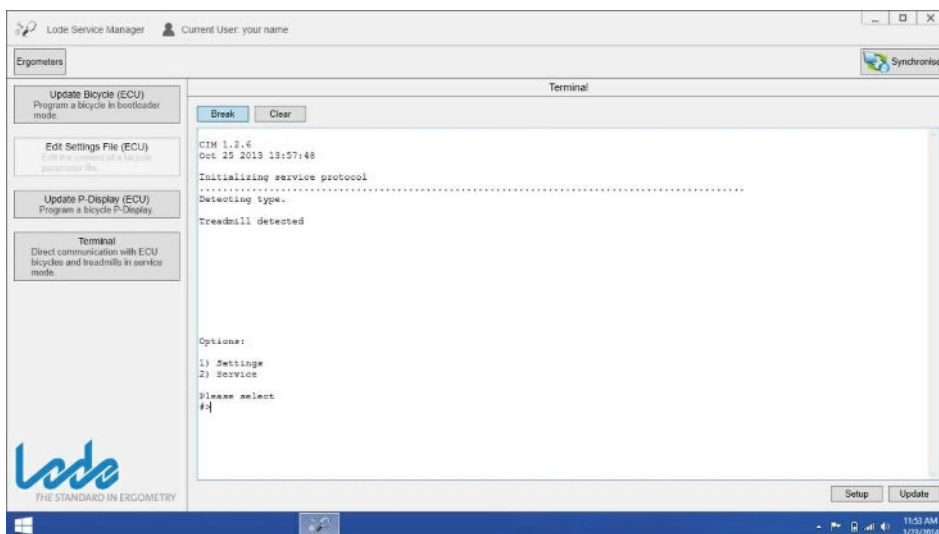
In case the device does not have a control unit the correct protocol can be set from a computer by using the Lode Service Manager tool that can be downloaded from the Lode website if you are a registered user. <http://lode.nl/en/product/getDownload/469>

Connect an USB cable from the computer to the USB port of the treadmill or use a RS232 cable from the computer to the RS232 port

Start the Lode Service Manager and login with the same account details that you use to login on the website.



1. Select Terminal
2. Choose Setup to select the COM port on which the device is connected.
3. Select preset Lode Bus Service Protocol
4. Press OK
5. Press Break
6. Switch the device off, wait 10 seconds
7. Switch the device on



The screen as shown left should show up within 5 seconds after powering up.

Figure 3

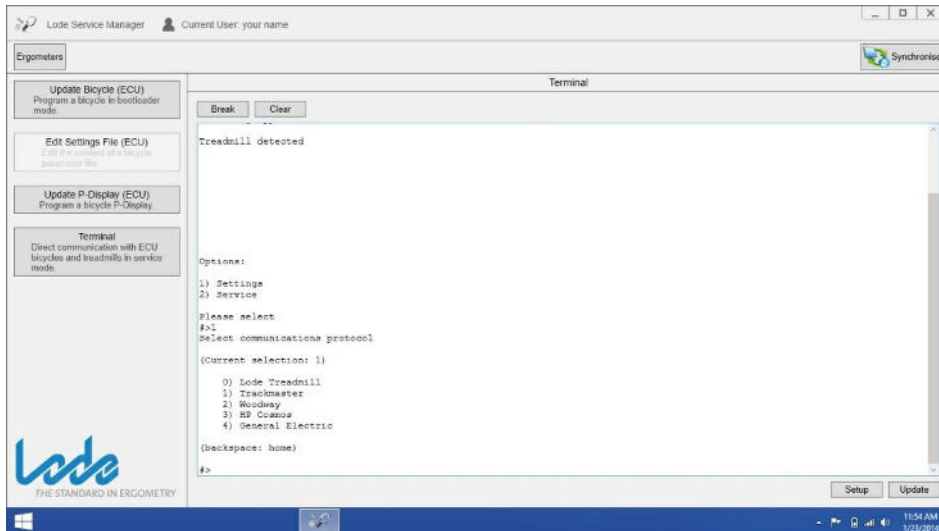


Figure 4

A menu is showed. use the numerical keys to make your selection. The next menu will automatically come up when a number is pushed.

Select settings (1) and choose the protocol as described in the "Ergometer set-up" chapter.

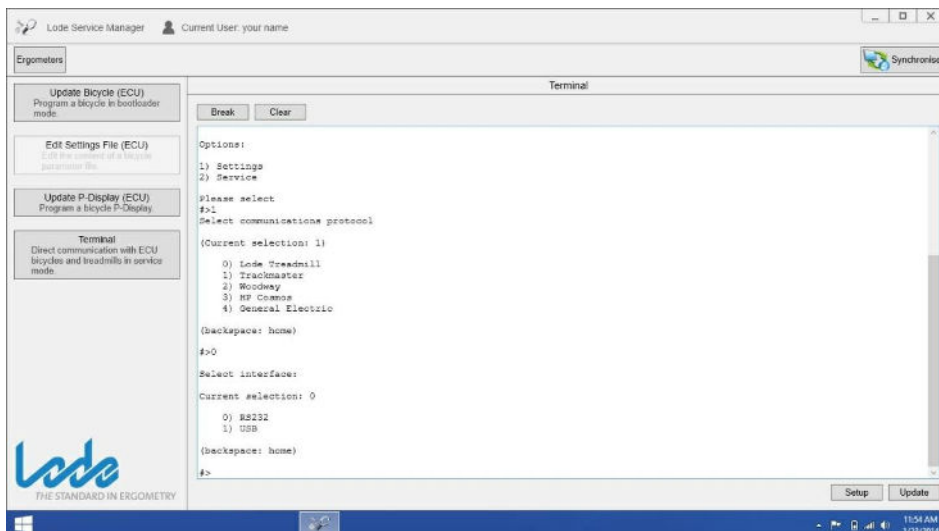


Figure 5

Choose which port you want to use RS232 (0) or USB (1)

This setting refers to the type of cable that you have connected to the Lode ergometer.

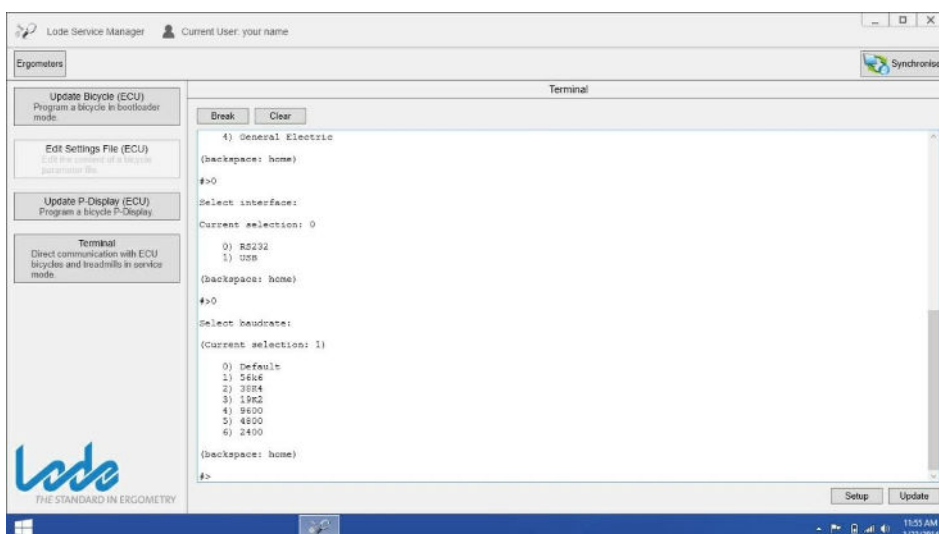
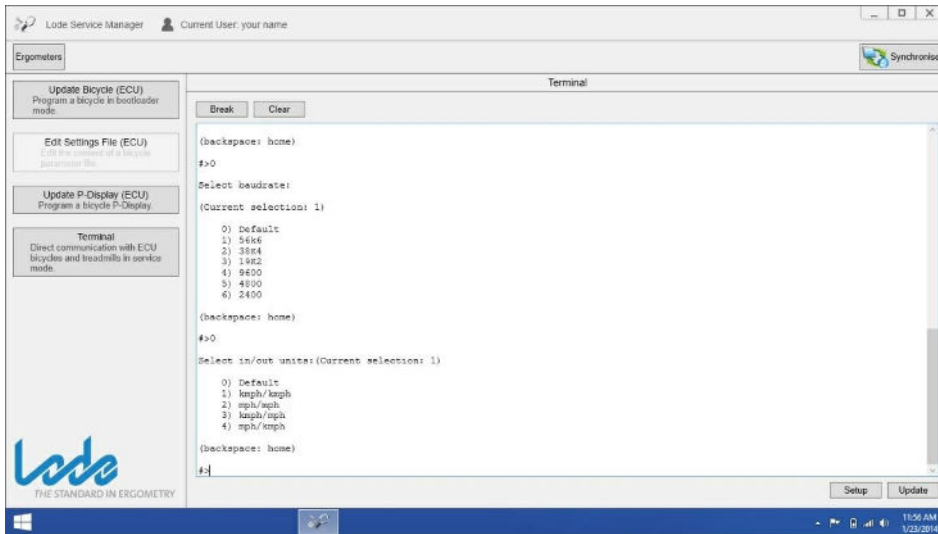


Figure 6

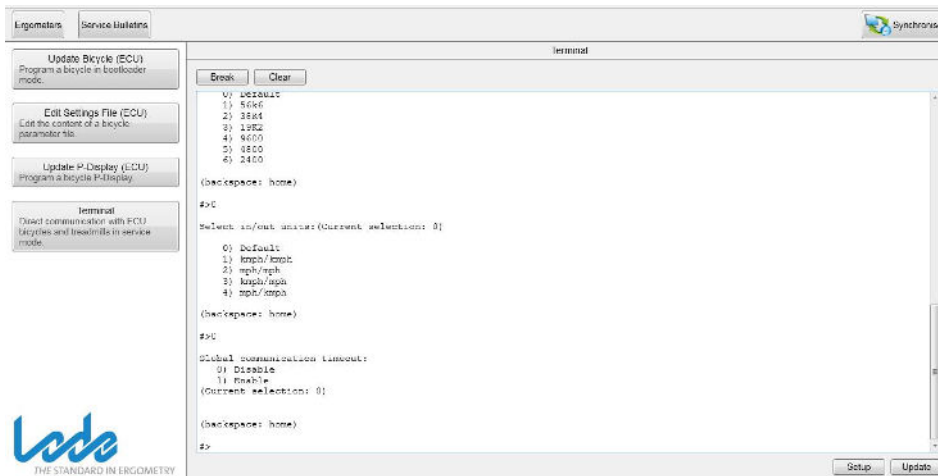
Select default for the baudrate.

Note that Default should always be selected unless different specified by your dealer.

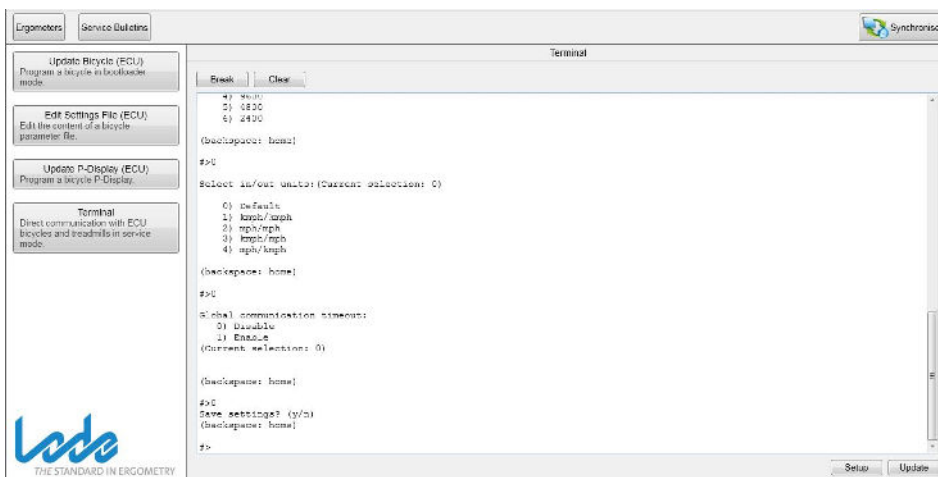


Select the kmh/kmh (1) conversion for if you are using the Trackmaster protocol. If you are using a protocol other than Trackmaster select "no conversion" (0).

Figure 7



Select "Disable" (0) for Global communication timeout.



Press "Y" to save the new settings and restart the device. Your device is now ready for use with the external controller.

Note that the device is automatically switched to terminal mode when no manual controller is present at the device itself.